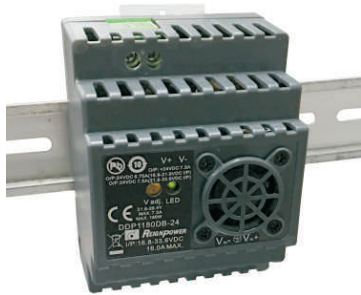




All the patents are held accountable counterfeiting.

Features



Green Power

- Standard/Din Rail Mounting Dual Purpose, meet EU EN 43880 installation dimension standard 4SU
- Width only 70mm(4SU)
- -20~+70°C wide working temperature, optional -40 °C
- No minimum load required
- DC output adjustable(±10%)
- Can be installed on din rail TS-35/7.5 or 15
- Protections: Short circuit / Overload / Over voltage / Input reverse polarity / Input under voltage protection
- 4KVdc I/O isolation (Reinforced isolation)
- 3 years warranty



DIMENSIONS:55.2(H)*90.7(D)*70(W)mm

WEIGHTS: 254g

Detail specifications

MODEL DDP1180D		B-12	B-24	B-48	C-24	C-48
OUTPUT	DC voltage	12V	24V	48V	24V	48V
	Rated Current	12.5A	7.5A	3.75A	7.5A	3.75A
	Current Range	0~12.5A	0~7.5A	0~3.75A	0~7.5A	0~3.75A
	Rated Power	150W	180W	180W	180W	180W
	Ripple&Noise(max.)	80mVp-p	80mVp-p	100mVp-p	80mVp-p	100mVp-p
	Voltage Adj. Range	10.8~13.2V	21.6~26.4V	43.2~52.8V	21.6~26.4V	43.2~52.8V
	Voltage Tolerance	±1.0%	±1.0%	±1.0%	±1.0%	±1.0%
	Line Regulation	±0.5%	±0.5%	±0.5%	±0.5%	±0.5%
	Load Regulation	±1.0%	±1.0%	±1.0%	±1.0%	±1.0%
	Setup, Rise Time	500ms, 60ms@24Vdc			500ms, 60ms@48Vdc	
Hold Up Time(Typ.)	Meet S1 level 6ms (full load), meet S2 level 10ms (70% load).			Meet S1 level 6ms (full load), meet S2 level 10ms (60% load).		
INPUT	Voltage Range	16.8~33.6Vdc			33.6~67.2Vdc	
	Efficiency(Typ.)	83%	85%	89%	89%	90%
	DC Current(Typ.)	9A@24Vdc			5A@48Vdc	
	Inrush Current(Typ.)	2.5A@24Vdc			2.5A@48Vdc	
PROTECTION	Overload	105~135% rated output power.				
		Protection type: Recovers automatically after fault condition is removed.				
	Over Voltage	14.4~16.8V	28.8~33.6V	56.7~67.2V	28.8~33.6V	56.7~67.2V
		Protection type: Recovers automatically after fault condition is removed.				
	Reverse Polarity	By internal MOSFET, no damage, recovers automatically after fault condition removed.				
Under Voltage Lockout	24Vin: Power ON ≥ 16.8V, OFF ≤ 16.5V			48Vin: Power ON ≥ 33.6V, OFF ≤ 33V		



All the patents are held accountable counterfeiting.

CE Standards

EN 55032, EN 61000-3-3, (EN 61000-4-2, EN 61000-4-3, EN 61000-4-4, EN 61000-4-5, EN 61000-4-6, EN 61000-4-8), IEC 62368-1(LVD), Heavy Industry level, criteria A

Safety Standards

UL 508 Design Reference
CE Marking
UL LISTED IND. CONT. EQ. 526B E225775

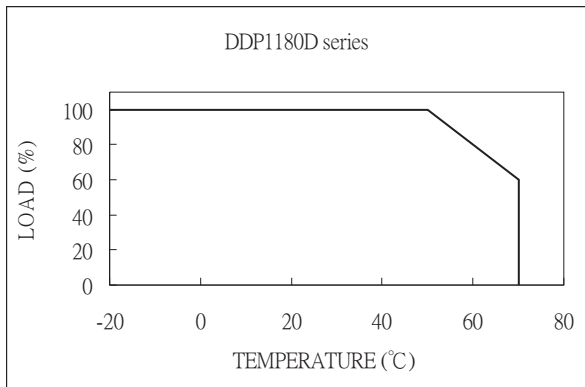
Environments

Operating Temperature -20 ~ 70°C, Ambient
Operating Humidity 20 ~ 90% RH, No Condensing
Storage Temperature -20 ~ 85°C, Ambient
Vibration 2G, 10~500Hz, 3 axes

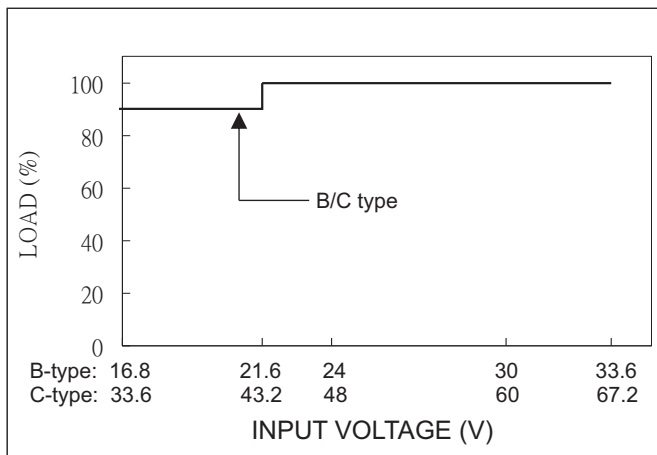
NOTE

- 1. Each output can provide up to maximum load, but total load can not exceed rated output power.
2. Line regulation is measured from low line to high line at rated load.
3. Load regulation is measured from 20% to 100% of rated load at 24VDC/48VDC input.
4. Ripple & Noise are measured with 20MHz oscilloscope at 24VDC/48VDC by using a 20cm long 12" twisted pair-wire with a 0.1uF/630V metal capacitor & a 47uF electrolytic capacitor parallel on the test point.
5. Efficiency is measured at rated load and 24VDC/48VDC input.
6. Hold-up time is measured at rated load and 24VDC/48VDC input.
7. Output Voltage Adjustable is measured on 5% of rated load.
8. When placing an order, model name is composed of "series name" and "model name on top of the specification form". For example, model name of B-24 of the order on top of the specification form is DDP1180DB-24.
9. Reign Power reserve the right to change specifications at any time without notice.

Derating Curve



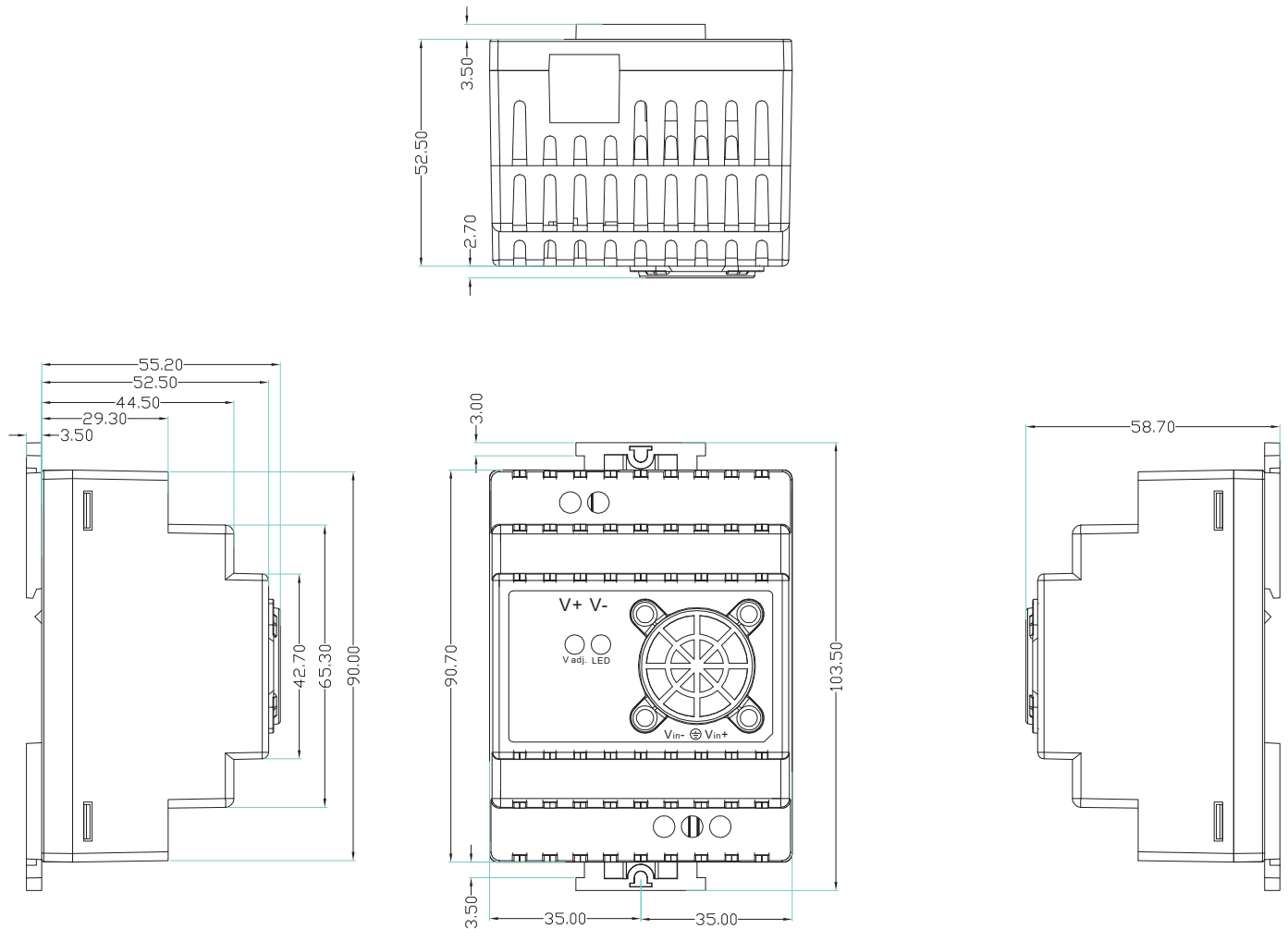
Output Derating VS Input Voltage





All the patents are held accountable counterfeiting.

Mechanical Details



Panel Designation

CASE NO. : DLP1220D
UNIT : mm
DIMENSION : 55.2(H)*90.7(D)*35(W)
MATERIAL : PLASTIC
COLOR : BLACK

Symbol	Description
V _{in-}	DC Negative Input Terminal
V _{in+}	DC Positive Input Terminal
⊕	Grounding (Earth)
V ₋	DC Negative Output Terminal
V ₊	DC Positive Output Terminal
LED	Green LED Indicator
V adj.	Potentiometer For Output Voltage