



All the patents are held accountable counterfeiting.

Features



Green Power

- Standard/Din Rail Mounting Dual Purpose, meet EU EN 43880 installation dimension standard 2SU
- Width only 35mm(2SU)
- 4:1 ultra wide input range
- -20~+70°C wide working temperature
- No minimum load required
- DC output adjustable(±10%)
- Cooling by free air convection
- Can be installed on din rail TS-35/7.5 or 15
- Protections: Short circuit / Overload / Over voltage / Input reverse polarity / Input under voltage protection
- 4KVdc I/O isolation (Reinforced isolation)
- 3 years warranty



DIMENSIONS:52.5(H)*90.7(D)*35(W)mm

WEIGHTS: 117g

Detail specifications

MODEL DDP1030D		G-05	G-12	G-15	G-24	L-05	L-12	L-15	L-24	
OUTPUT	DC voltage	5V	12V	15V	24V	5V	12V	15V	24V	
	Rated Current	6A	2.5A	2A	1.25A	6A	2.5A	2A	1.25A	
	Current Range	0~6A	0~2.5A	0~2A	0~1.25A	0~6A	0~2.5A	0~2A	0~1.25A	
	Rated Power	30W	30W	30W	30W	30W	30W	30W	30W	
	Ripple&Noise(max.)	60mVp-p	75mVp-p	75mVp-p	100mVp-p	60mVp-p	75mVp-p	75mVp-p	100mVp-p	
	Voltage Adj. Range	4.5~5.5V	10.8~13.2V	13.5~16.5V	21.6~26.4V	4.5~5.5V	10.8~13.2V	13.5~16.5V	21.6~26.4V	
	Voltage Tolerance	±2.0%	±2.0%	±2.0%	±2.0%	±2.0%	±2.0%	±2.0%	±2.0%	
	Line Regulation	±0.5%	±0.5%	±0.5%	±0.5%	±0.5%	±0.5%	±0.5%	±0.5%	
	Load Regulation	±1.5%	±0.5%	±0.5%	±0.5%	±1.5%	±0.5%	±0.5%	±0.5%	
	Setup, Rise Time	120ms, 85ms at full load.								
	Hold Up Time(Typ.)	G-type: 5ms@24Vdc input					L-type: 10ms@48Vdc input			
	External Capacitance load(Max.)	3300μF	2200μF	1500μF	1000μF	3300μF	2200μF	1500μF	1000μF	
INPUT	Voltage Range	9~36Vdc				36~75Vdc				
	Efficiency(Typ.)	85%	86%	87%	89%	86%	89%	90%	91%	
	DC Current(Typ.)	1.5A/24Vdc				0.8A/48Vdc				
	Inrush Current(Typ.)	15A/24Vdc				15A/48Vdc				
PROTECTION	Overload	105~135% rated output power.								
	Over Voltage	6~7.5V	14~17V	20.9~23.1V	28~34V	6~7.5V	14~17V	20.9~23.1V	28~34V	
	Reverse Polarity	By internal MOSFET, no damage, recovers automatically after fault condition removed.								
	Under Voltage	24Vin(G-type): Power ON ≥ 9V, OFF ≤ 7.5V								
	Lockout	48Vin(L-type): Power ON ≥ 36V, OFF ≤ 34V								



All the patents are held accountable counterfeiting.

CE Standards

EN 55032, EN 61000-3-3, (EN 61000-4-2, EN 61000-4-3, EN 61000-4-4, EN 61000-4-5, EN 61000-4-6, EN 61000-4-8), IEC 62368-1(LVD), Heavy Industry level, criteria A

Safety Standards



UL 508 Design Reference



CE Marking

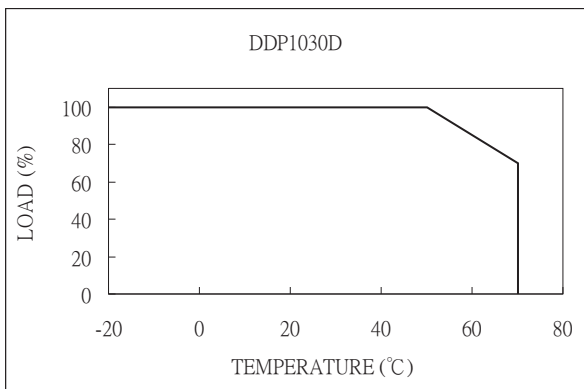
Environments

Operating Temperature -20 ~ 70°C, Ambient
Operating Humidity 20 ~ 90% RH, No Condensing
Storage Temperature -20 ~ 85°C, Ambient
Vibration 2G, 10~500Hz, 3 axes

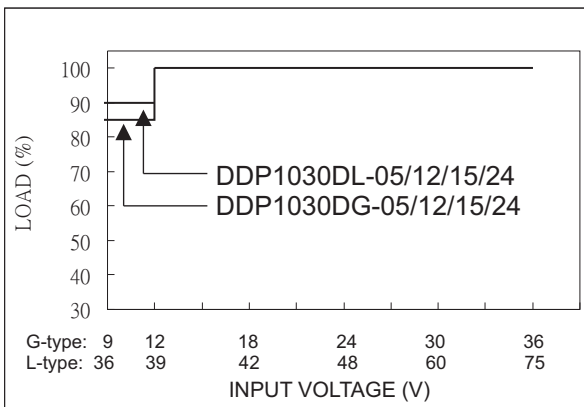
NOTE

- 1. Each output can provide up to maximum load, but total load can not exceed rated output power.
2. Line regulation is measured from low line to high line at rated load.
3. Load regulation is measured from 20% to 100% of rated load at 24VDC/48VDC input.
4. Ripple & Noise are measured with 20MHz oscilloscope at 24VDC/48VDC by using a 20cm long 12" twisted pair-wire with a 0.1uF/630V metal capacitor & a 47uF electrolytic capacitor parallel on the test point.
5. Efficiency is measured at rated load and 24VDC/48VDC input.
6. Hold-up time is measured at rated load and 24VDC/48VDC input.
7. Output Voltage Adjustable is measured on 5% of rated load.
8. When placing an order, model name is composed of "series name" and "model name on top of the specification form". For example, model name of the order on top of the specification form is DDP1030DG-05.
9. Reign Power reserve the right to change specifications at any time without notice.

Derating Curve



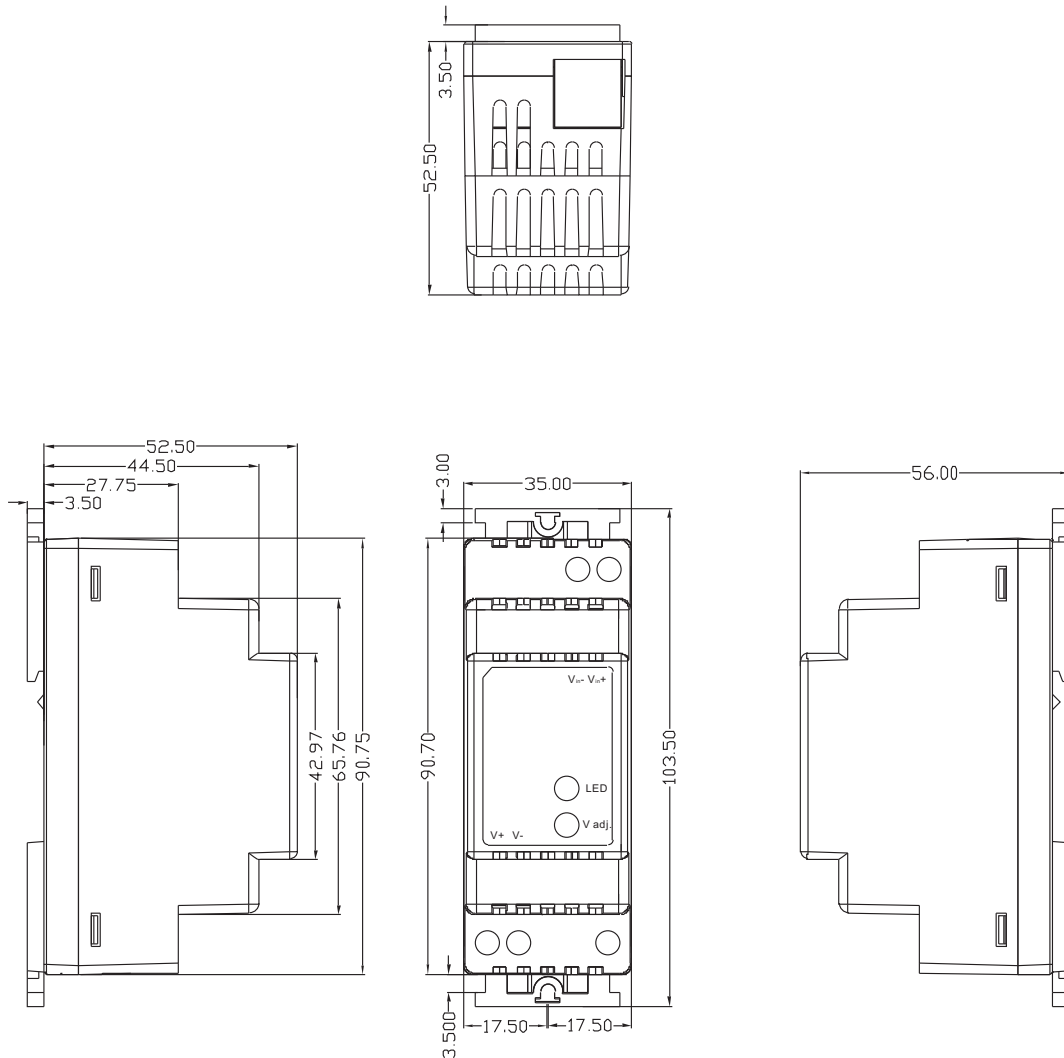
Output Derating VS Input Voltage





All the patents are held accountable counterfeiting.

Mechanical Details



Panel Designation

CASE NO. : CS025D
UNIT : mm
DIMENSION : 52.5(H)*90.7(D)*35(W)
MATERIAL : PLASTIC
COLOR : BLACK

Symbol	Description
V _{in-}	DC Negative Input Terminal
V _{in+}	DC Positive Input Terminal
V ₋	DC Negative Output Terminal
V ₊	DC Positive Output Terminal
LED	Green LED Indicator
V adj.	Potentiometer For Output Voltage